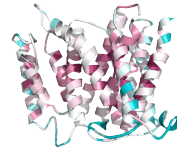


RPMI Media Production



RPMI Media

- RPMI-1640 Media is from ATCC Catalog Number 30-2001 and is packaged in 500 ml bottles
 - o Contains 2.38 g/L HEPES, 1.5 g/L NaHCO₃, 0.11 g/L Sodium Pyruvate, and 0.3 g/L Glutamine -- Location: Refrigerator
- Fetal Bovine Serum from Atlanta Biologicals Catalog Number S11050 - Location: Freezer
- Penicillin / Streptomycin from ATCC Catalog Number 30-2300
 - o Stock Concentration is 10,000 IU Penicillin and 10,000 µg/ml Streptomycin - Location Freezer
- G418 is from MP Biomedicals Catalog Number 1672548
 - o 50 mg/ml solution - Location: Refrigerator
- Puromycin Dihydrochloride is from Calbiochem Catalog Number 540222
 - o 10 mg/ml Stock IN WATER filter sterilize if making from solid - Location: Freezer

RPMI Base (500 ml)

1. Use 1 bottle of RPMI Media
2. Aliquot into 100 ml bottles

RPMI 10% FBS (500 ml)

1. 500 ml RPMI Base
2. 50 ml FBS (add in sterile hood)
3. Filter Sterilize and Aliquot into 100 ml bottles (Never leave in 500 ml bottles)

RPMI 0.1% FBS Media (500 ml)

1. 500 ml RPMI Base
2. 2.5 ml FBS (add in sterile hood)
3. Filter Sterilize and Aliquot into 100 ml bottles (Never leave in 500 ml bottles)

RPMI 10% FBS Puro Selection Media (100 ml)

1. 100 ml RPMI Base
2. 10 ml FBS
3. Add 30 µl Puromycin Stock (Stock Concentration 10 mg/ml) final conc 3.0 µg/ml Puromycin
4. Filter Sterilize and Aliquot into 100 ml bottles

RPMI 10% Puro Maintenance Media (500 ml)

1. 500 ml RPMI Base
2. 50 ml FBS
3. Add 50 µl Puromycin Stock (Stock Concentration 10 mg/ml) final conc 1.0 µg/ml Puromycin
4. Filter Sterilize and aliquot into 100 ml bottles (Never leave in 500 or 1000 ml bottles)